

# KIPP NEWS

100 %  
VISION  
SINCE 1919

HEINRICH KIPP WERK



**NEW**

## SNAP LOCKS FOR SECURE LATCHING



**RECERTIFICATION**  
NOVOnox hygienic



**SUSTAINABILITY**

KIPP USES CO<sub>2</sub>-NEUTRAL STEEL



JULY 2021

# CONTENTS

## KIPP NEWS

Dear readers,

We know that people thrive when confronted with new challenges.

We at KIPP are looking forward confidently to the second half of the year although, until now 2021 has been under the cloud of the pandemic.

But even in times like these, we are delighted to be able to continue extending our product range: our new catalogues now contain 55,000 items. For example, the 5,000 new items include mandrel collets with cam lever, chain clamps and snap locks in numerous versions.

In this new edition of KIPP NEWS, you can also read about the measures that have been taken regarding sustainability and environmental protection – from the use of "green steel" in construction up to the use of our cogeneration unit.

Enjoy reading!



Otto Braun, Sales Manager

MANDREL COLLET  
WITH CAM LEVER **3**

NEW  
CATALOGUES **3**

RECERTIFICATION  
HYGIENIC USIT® **4**

KIPP PRODUCTS  
IN USE **4**

CHAIN CLAMPS FOR  
WORKPIECES **5**

PRODUCT VIDEOS  
ON YOUTUBE **5**

NEW LOCATION  
IN TURKEY **5**

CO2 NEUTRAL  
"GREEN STEEL" **6**

TREE TRANSPLANTATION  
INSTEAD OF CHAINSAW **6**

EVERY YEAR WE SAVE  
226 T OF CO2 **6**

SNAP LOCKS FOR  
SECURE LATCHING **7**

LOCATIONS **8**

## MANDREL COLLET WITH CAM LEVER

Fixated in bores

A new solution for clamping two components together easily and without tools: mandrel collets enable workpieces to be positioned and fixated through bores using the pull-down effect. They are operated by a cam lever. The clamping range and the retaining force can be adjusted infinitely. This clamping solution can be used with through-holes and blind holes – for these holes, there are no requirements regarding dimensions, surfaces or shapes. These mandrel collets are available in various diameters and sizes. Depending on the diameter of the mandrel collet,

retaining forces can be up to 3.3 kN. The cam lever is optimal for quick fastening. Because the clamping process is applied through surface pressure, workpiece surfaces are spared. This solution is ideal for use in fixture and machine tool construction.



## **NEW** CATALOGUES OPERATING PARTS | STANDARD ELEMENTS AND CLAMPING TECHNOLOGY



### 4,800 NEW ITEMS

The new KIPP catalogue **OPERATING PARTS | STANDARD ELEMENTS** contains 1,600 pages.

- FEATUREgrip product line - smart components suitable for Industry 4.0.
- NOVOnox hygienic product line – stainless steel products designed to meet high cleanliness requirements
- A large number of new thermoset products, indexing plungers, ball lock pins, tubular handles and hinges.

### 200 NEW ITEMS

In the 580 pages of the **CLAMPING TECHNOLOGY** catalogue, the range has been significantly extended.

- KIPPflexX 5-axis vice can be used as a standard vice for clamping raw parts or as a centric vice for side clamping – 2IN1.
- 5-axis module clamping system 138 for zero-point clamping of large or heavy workpieces.
- Pneumatically operated clamping elements. Chain clamping system for fixating large, round and irregular workpieces. Basic elements with T-slots.



## RECERTIFICATION OF THE HYGIENIC USIT® SCREW AND SEAL SYSTEM

The new Hygienic USIT® screw and seal system was specially developed for use in hygiene-sensitive areas. As part of the process of recertification by the EHEDG, some product optimisations were introduced. The revised stainless steel parts are certified to EL Class I AUX. The inside diameter of the sealing washer has been slightly reduced in order to improve centring. This meant that the screw shank had to be adapted. HEINRICH KIPP WERK also revised the gradations in the shank lengths. To standardise the appearance of the screw connection system, the cap nut has been adapted at the screw head. The baseline of the screw and seal system is the hygienic USIT® seal from Freudenberg. The special contour of the sealing bead and the polished flange

seat of the screw head ensure positive sealing of the screw point, even after repeated tightening and loosening. To suit the sealing washer, KIPP developed the matching NOVOnox hygienic hexagon head bolt and cap nut. A combination of these stainless steel products forms a screw and seal system that meets all the requirements of hygiene-sensitive areas. Polished surfaces, radii and shape transitions are cavity-free and ensure easy cleaning.



## KIPP PRODUCTS IN USE

Steinfort Glas from the Netherlands



The Steinfort Glas BV company from Franeker in the Netherlands specialises in glass processing. Depending on the current customer requirement they can produce e.g. hardened or illuminated glass in all types, sizes and colours. Steinfort has already fitted around 80% of the buses in the Netherlands with Antireflex protective glass in order to protect the drivers.

Besides the KIPP hinges K0435 made of thermoplastic and stainless steel, handles and magnets were also installed on the protective screens, in order to enable safe and simple operation. Steinfort values the good collaboration with KIPP, along with the high production depth and the enormous speed of response.

## NEW CHAIN CLAMPS FOR WORKPIECES WITH IRREGULAR CONTOURS



HEINRICH KIPP WERK has extended its product range with chain clamps, which are used to securely clamp and fasten workpieces that have complex contours or shapes. Custom-made clamping elements are no longer required. Two variants are available with retaining forces 15 kN or 40 kN, both with clamping hook, clamping bracket, four roller chains, four chain links, six plastic elements and a securing set for clamping chains. Roller chains are also available separately in other lengths so that users can adapt flexibly to the most varied workpiece diameters and shapes. Also available are turnbuckles, which are recommended for chain lengths of three metres or more. The KIPP range also includes 120° prisms which can be positioned flexibly on the machine table.

## PRODUCT VIDEOS ON YOUTUBE

For a better understanding of the applications – you can find numerous videos and animations about KIPP products on our YouTube channel. Please come to see us at

► [youtube.com/HEINRICHKIPPWERK](https://youtube.com/HEINRICHKIPPWERK)



## BRIEF NOTES

## NEW LOCATION IN TURKEY

In 2020, KIPP opened a new subsidiary in Istanbul. We have to thank our colleague Herr Erkan Çakır, who is now taking care of our Turkish customers.



[www.kipp.com.tr](https://www.kipp.com.tr)





## KIPP USES CO<sub>2</sub>-NEUTRAL "GREEN STEEL".

HEINRICH KIPP WERK is extending the logistics at its headquarters in Sulz am Neckar. The new building is a sustainable investment in the future, in two senses. KIPP's Managing



Director Nicolas Kipp emphasised that "we are focusing on long-term growth". "We are taking responsibility and are supporting climate protection by using CO<sub>2</sub>-neutral steel". For the new building, which has a total surface area of 4,300 m<sup>2</sup>, 400 tonnes of reinforced steel were required. For the steel to be used, we decided on the certified "green steel" supplied by our steel partner the SÜLZLE Group. KIPP compensates for the CO<sub>2</sub>-loading during steel production through a compensation contribution. This climate contribution supports projects located regionally as well as in emerging and developing countries.

## TREE TRANSPLANTATION INSTEAD OF CHAINSAW

Before construction began on the logistics hall, trees were dug up and moved to a different location. This was made possible by a modern round spade machine supplied by the Opitz company. These large cedars, which had been standing there for 20 years, were transported to their new location along with their roots.

At our pond, the three cedars now have sufficient space to continue growing, absorb CO<sub>2</sub>, and provide plenty of nesting opportunities for birds. It's a tradition: every time we build an extension or new building, HEINRICH KIPP WERK plants new cedars. As a family business, we remain aware of our responsibility to people and to the environment.



## EVERY YEAR WE SAVE 226 t OF CO<sub>2</sub>



A cogeneration unit – called a BHKW – works like an engine, which drives the generator and thus delivers power. At HEINRICH KIPP WERK, the BHKW is heat-led and is therefore principally a heater which delivers power in addition to heat. The waste heat from the compressors, which fill the buffer tanks using compressed air, is used to supplement the building heating and hot water supply. In summer, the heat is converted into cold by the adsorption systems and used for cooling the production machines. We use the additional energy to generate power. This is fed into the public power grid.

## NEW SNAP LOCKS FOR SECURE LATCHING

HEINRICH KIPP WERK has developed new plastic snap locks. These are produced directly at our location in Germany.

These products were specially designed for particularly space-saving flush-mounting in doors, flaps and drawers. Users simply have to push a door to and the snap function ensures secure latching. Just like their use, installation is also very simple.

The snap locks are available in the following versions:

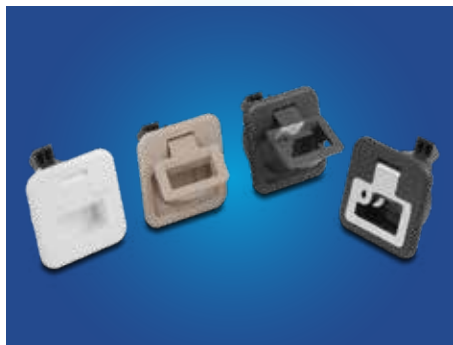
- Models with fold-down handles are available in four variants for door leaf thicknesses from 2 to 22 mm, and also lockable. Available colours are: black, white, beige and black with chromed grip.
- Snap-in locks are designed for thin doors with thickness from 0.6 to 1 mm and can be mounted without tools.
- On versions with countersunk knob for door thicknesses from 1.2 to 19 mm, the knob springs out when pressed. On certain models, the knob can be turned. This product-group

is available in black, white, beige and chromed.

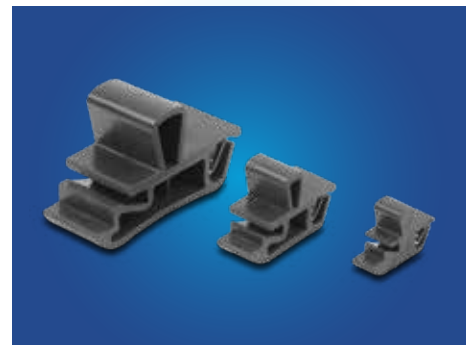
Snap-locks ensure reliable latching in areas where conventional latching mechanisms can be opened accidentally by sudden movements or vibrations – for example on ships or in vehicle doors. But snap locks are also required in the packaging industry, medical technology and machine construction.



Plastic snap locks with twist knob - K1654



Plastic snap locks with fold-down grip - K1651



Plastic snap-in snap locks - K1652



Use in vehicles



Installation in mounting holes



Secure latching of maintenance covers



**HEINRICH KIPP WERK GmbH & Co. KG**  
Heubergstrasse 2  
72172 Sulz am Neckar, Germany  
[www.kipp.com](http://www.kipp.com)



**KIPP FRANCE SAS**  
6, rue des Frères Caudron  
78140 Vélizy-Villacoublay  
[www.kipp.fr](http://www.kipp.fr)



**KIPP ITALIA SRL**  
Via Gaudenzio Ferrari, 21 C  
21047 Saronno (VA), Italy  
[www.kipp.it](http://www.kipp.it)



**KIPP NEDERLAND BV**  
Willem Dreeslaan 251  
2729 NE Zoetermeer  
[www.kippcom.nl](http://www.kippcom.nl)



**HEINRICH KIPP GmbH**  
Traunaufer Arkade 1  
4600 Thalheim bei Wels  
[www.kipp.at](http://www.kipp.at)



**KIPP SCHWEIZ AG**  
Benzburweg 18A  
4410 Liestal BL  
[www.kipp.ch](http://www.kipp.ch)



**KIPP POLSKA Sp. z o.o.**  
ul. Ostrowskiego 7  
53-238 Wrocław, Poland  
[www.kipp.pl](http://www.kipp.pl)



**KIPP CZ s.r.o.**  
Vienna Point 2  
Václavská 188/119d  
Dolní Heršpice, 619 00 Brno  
[www.kipp.cz](http://www.kipp.cz)



**KIPP TURKEY LTD. ŞTİ.**  
Cevizli Mahallesi, Zuhul Caddesi  
Ritim İstanbul Sit. A5 Blok Apt.  
No: 48E/182  
34846 Maltepe/İstanbul  
[www.kipp.com.tr](http://www.kipp.com.tr)



**KIPP SCANDINAVIA AB**  
Zakrisdalsvägen 26  
653 42 Karlstad  
[www.kipp.se](http://www.kipp.se)



**KIPP Inc.**  
4305 N. Roosevelt Rd.  
MI 49127 Stevensville  
[www.kippusa.com](http://www.kippusa.com)

**HEINRICH KIPP GmbH**  
Traunaufer Arkade 1  
4600 Thalheim bei Wels  
Tel. +43 7242 9396 - 7640  
[office@kipp.at](mailto:office@kipp.at)  
[www.kipp.at](http://www.kipp.at)

**100 %  
VISION  
SINCE 1919**



**ORDER NOW:**

**[kipp-catalogue.com](http://kipp-catalogue.com)**

Or send us the completed form:

- ☐ **KIPP CATALOGUE OPERATING PARTS |  
STANDARD ELEMENTS**
- ☐ **KIPP CATALOGUE CLAMPING TECHNOLOGY**

Surname

Department

Email

Company

Street

Postcode/Town or city

Telephone